

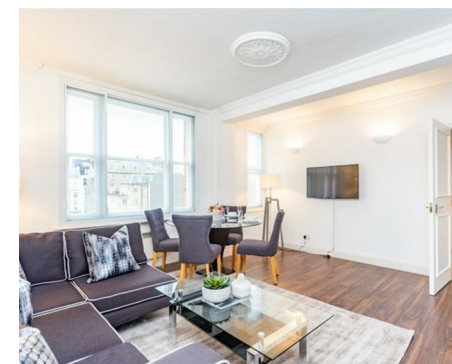
Let **UK** Home

2 Bedrooms

Flat

Located in London

£5,460 Per Month



info@letukhome.co.uk

<https://www.letukhome.co.uk/>

01795 358 886



39 Hill Street, Mayfair London

W1J 5NA



Let UK Home are excited to present this stunning two bedroom apartment nestled in the prestigious area of Mayfair.

This charming flat at 39 Hill Street offers a perfect blend of comfort and elegance. Spanning an impressive 733 square feet, the property features a well-appointed reception room that serves as an inviting space for relaxation and entertaining guests.

The flat comprises two spacious bedrooms, each designed to provide a tranquil retreat from the bustling city life. With two modern bathrooms, convenience and privacy are assured for both residents and visitors alike.

Mayfair is renowned for its vibrant atmosphere, with an array of high-end shops, exquisite dining options, and cultural attractions just a stone's throw away. This location not only offers a luxurious lifestyle but also easy access to excellent transport links, making it ideal for both professionals and families.

This flat presents a unique opportunity to reside in one of London's most sought-after neighbourhoods, where sophistication meets comfort.

Within walking distance are exquisite restaurants, pubs and bars as well as well-known hotels like The Dorchester, auction houses and a variety of members clubs. Residents of these attractive W1 apartments also enjoy easy access to leafy Hyde Park.

39 Hill Street, Mayfair London

£5,460 Per Month



- 5th Floor
- Available furnished or unfurnished
- Access to a private gated communal garden
- Flexible rental terms
- Video Entry & CCTV

- On-site building manager and Lift
- Pet Friendly
- Superfast Broadband
- 24 hour maintenance service
- EPC Rating: C



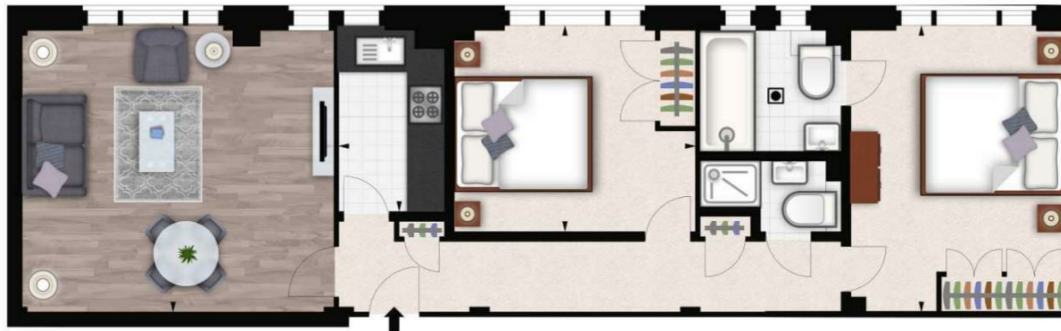


Let **UK** Home

3F 2 Eastbourne Terrace
Paddington
London
W2 6LG

01795 358 886

info@letukhome.co.uk



Council Tax Band: G

Local Authority:

Agents Note: Whilst every care has been taken to prepare these particulars, they are for guidance purposes only. All measurements are approximate and are for general guidance purposes only and whilst every care has been taken to ensure their accuracy, they should not be relied upon and potential buyers/tenants are advised to recheck the measurements.

Energy Efficiency Rating		Current	Potential
Very energy efficient - lower running costs			
(92 plus) A			
(81-91) B			
(69-80) C			
(55-68) D			
(39-54) E			
(21-38) F			
(1-20) G			
Not energy efficient - higher running costs			
		73	82
England & Wales	EU Directive 2002/91/EC		

<https://www.letukhome.co.uk/>